

# Text Panel

## A Series Text Panel

### OVERVIEW



- ▲ Plug-and-Play
- ▲ Support Start-up Screen
- ▲ RS-485 Interface
- ▲ Full Support A-1x Series Control
- ▲ Resolution : 192 x 64 pixels
- ▲ Wide Operation Temperature : -10 ~ +60 °C
- ▲ Dual Watchdog Timer
- ▲ Surge , EFT and ESD Protection
- ▲ Brightness : 60cd/m2
- ▲ Input Power : +10 ~ +30 VDC

### Technical specifications

| Type                  | ATP  |
|-----------------------|--|
| Screen Type           | 4.3" STN-LCD   |
| Display Color         | Monochromatic  |
| Backlight             | The back-light automatic turn off time is 5 sec (On = do not turn off) |
| Resolution            | 192 x 64 pixels  |
| Display Range         | 96x32mm  |
| Start-up Screen Size  | 108*64 Bmp(1-bit)  |
| Interface             | RS-485   |
| Input Power           | 10 ~ 30 VDC  |
| LCM life              | With 25±2°C , 65±10% RH over 50000 hours                               |
| Brightness            | 60cd/m2  |
| Contrast              | Adjustable resistor  |
| Cooling Method        | Natural air cooling  |
| Operation temperature | -10°C to +60 °C  |
| Storage temperature   | -20 °C to +70 °C   |

For further information, please visit : [www.yottacontrol.com/atp.html](http://www.yottacontrol.com/atp.html)

# Text Panel

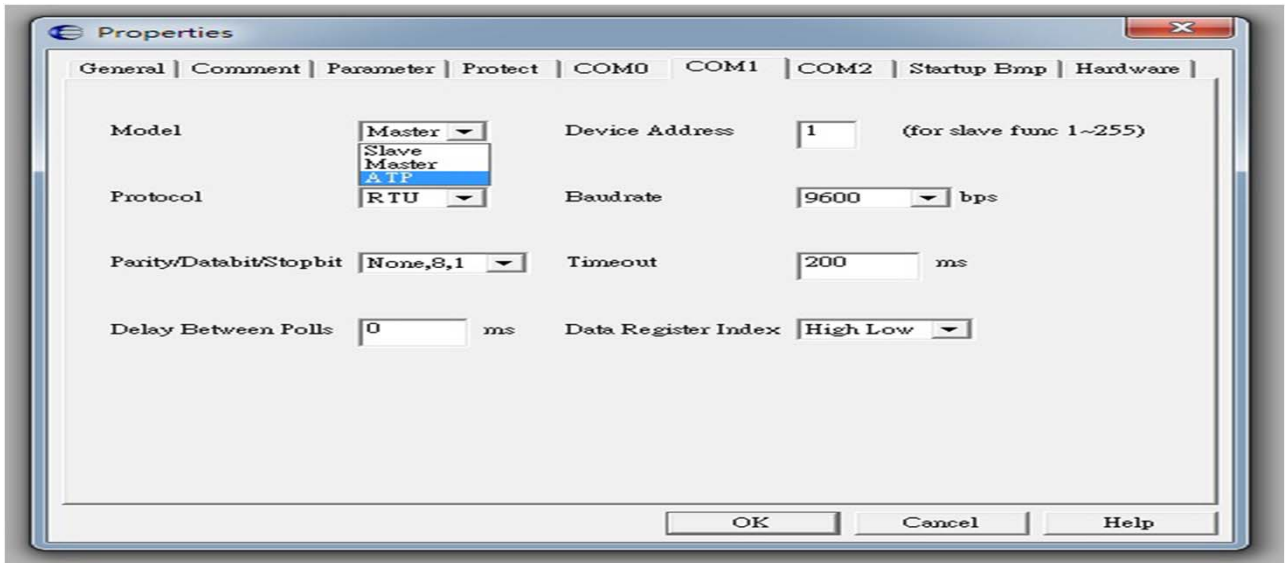
## A Series Text Panel

## USER GUIDE

### YottaEditor Setup

Connect ATP to Controller and select the COM model to ATP.

#### Yottacontrol A Series Text Panel (ATP)



Now available adjust program parameter in the ATP without a PC.  
And controller will show 'ATP Connect'.



For further information, please visit : [www.yottacontrol.com/atp.html](http://www.yottacontrol.com/atp.html)