

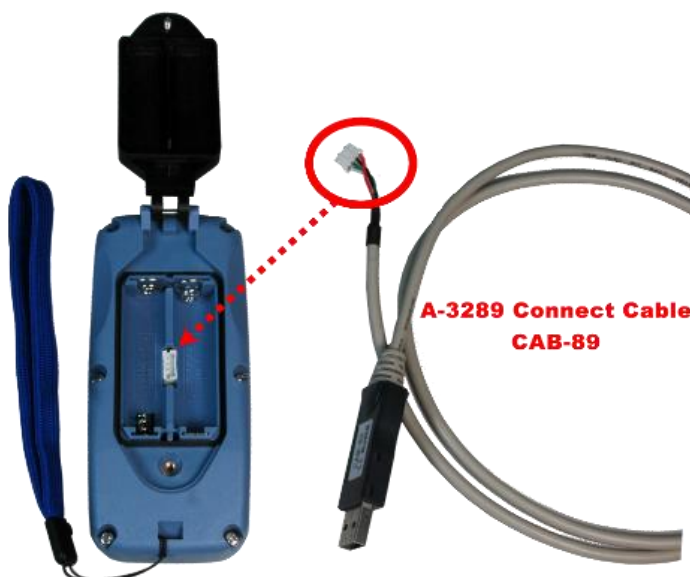
Yottacontrol A-3290 WiFi Transmitter Quick Start



The Yottacontrol A-3290 WiFi Transmitter have a Two-way communication to communicate with Modbus TCP/IP devices.

Before the regular use, need to finish the related setup processes. Please prepare below items to complete the setup.

1. Download and install the A-3290 connect cable CAB-89 driver from below web link.
<http://www.yottacontrol.com/download/CAB89.rar>
2. Download YottaUtility from below web link.
http://www.yottacontrol.com/download/YOTTA_UTILITY.rar
3. Prepare A-3290 + CAB-89 cable, and one of WIFI DO device(3rd party device is acceptable).
4. Open A-3290 rear cover and use CAB-89 to link A-3290 and PC. (Remove battery)

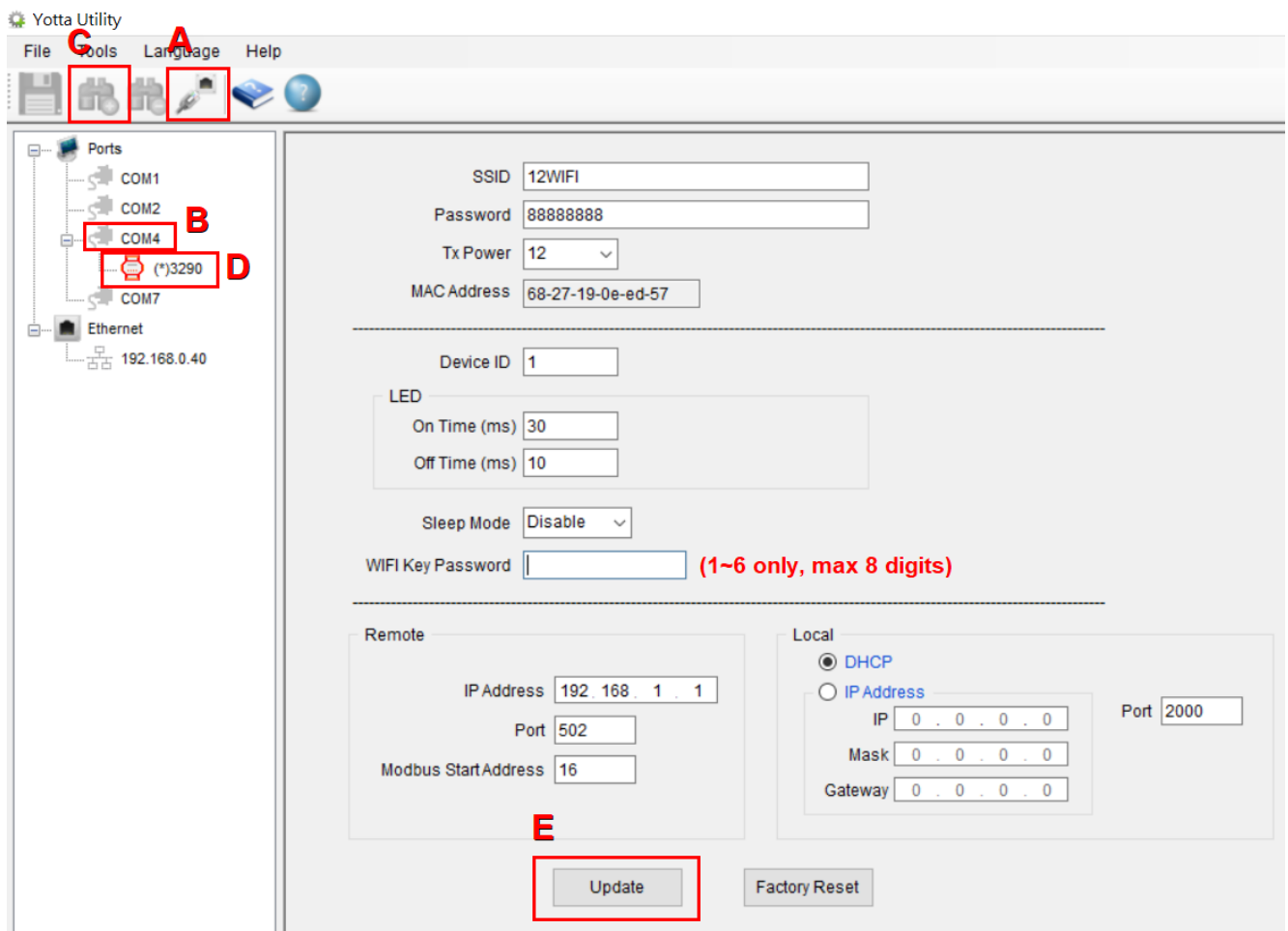


Setup processes with A-3290 and WIFI DO device(ex: take Yottacontrol A-1269 for example)

Setup processes for Yottacontrol A-3290 WiFi Transmitter

Step1: search A-3290 correctly in YottaUtility(please check below picture for reference)

- 1) Through cable CAB-89 to connect computer, open YottaUtility.
- 2) Long press the A-3290 START button until the green light turns on, then once released the START button, the LED light will disappear(if operation password has been set, then once released the START button, the LED light will continue to flash green/red).OK to run next setup process now.
- 3) Click scan Communication serial port(A)
- 4) Select the match communication serial port(B) that computer captured and then click on the search module(C).
- 5) Select the connected module(D), click on the bottom of the icon and then the module will appear parameter configuration interface.



Setp2: Key in correct SSID + password(E) to match in the same LAN(default SSID is 12WIFI, and default password is 88888888). **Note¹**. If you want to change a new SSID and password, please be well reminded to assign 8 digits password to match WIFI password rule. Note that SSID and Password only support 0-9, a-z, A-Z characters, do not support: -! @ # ¥% & * and other characters. Press Update(E) if any revise(screen will show OK and LED will flash to RED one time).**Note²**.

Other applications:

1. If you have multiple sets of A-3290+A-1269, you could assign each set to have different but matched SSID and Password to achieve multiple groups using in the same area.
 2. Error using:
If you have multiple sets of A-3290+A-1269, and you assign all of them have the same SSID and Password, then all the system will not be stable(sometimes the operation is correct, and sometimes the operation is not correct). The connection is randomly, which one gets signal first will react right away, and user will not get always correct response.
 3. You also could use 2pcs A-3290 to control 1pcs A-1269. For this case, you need to assign all of them to have the same SSID and Password. 1st A-3290 do not need to change Modbus Start Address(default:16), and could use button1~6 to control A-1269 DO0~DO5. Then 2nd A-3290 need to change Modbus Start Address to 22 to use button1~2 to control A-1269 DO6 ~DO7
- ◆ WIFI Key Password: Allow you to setup password for A-3290 to protect misuse(number 1~6 only, max 8 digits), user need to press the password in advance after START A-3290.
 - ◆ Modbus Start Address: Allow you to setup the start address of DO for A-3290 1~6 buttons(all of Yottacontrol IO module initial DO address start from 16 to 32).
 - ◆ TX power: 1~12(max), allow you to limit the remote control distance, 12 could reach to 100M in space.

Note1:

For all A-12xx series IO modules, Yottacontrol assign the same SSID + password as A-3290. Therefore, without any setup processes, you could use A-3290 to control A-1269 DO0~DO6 directly. It means once you received the goods, no need to do any setup process; all you need to do is just put battery in A-3290 and power on A-1269 with 24VDC. If you want to revise the default setting, please follow all the setup processes in the quick start manual.

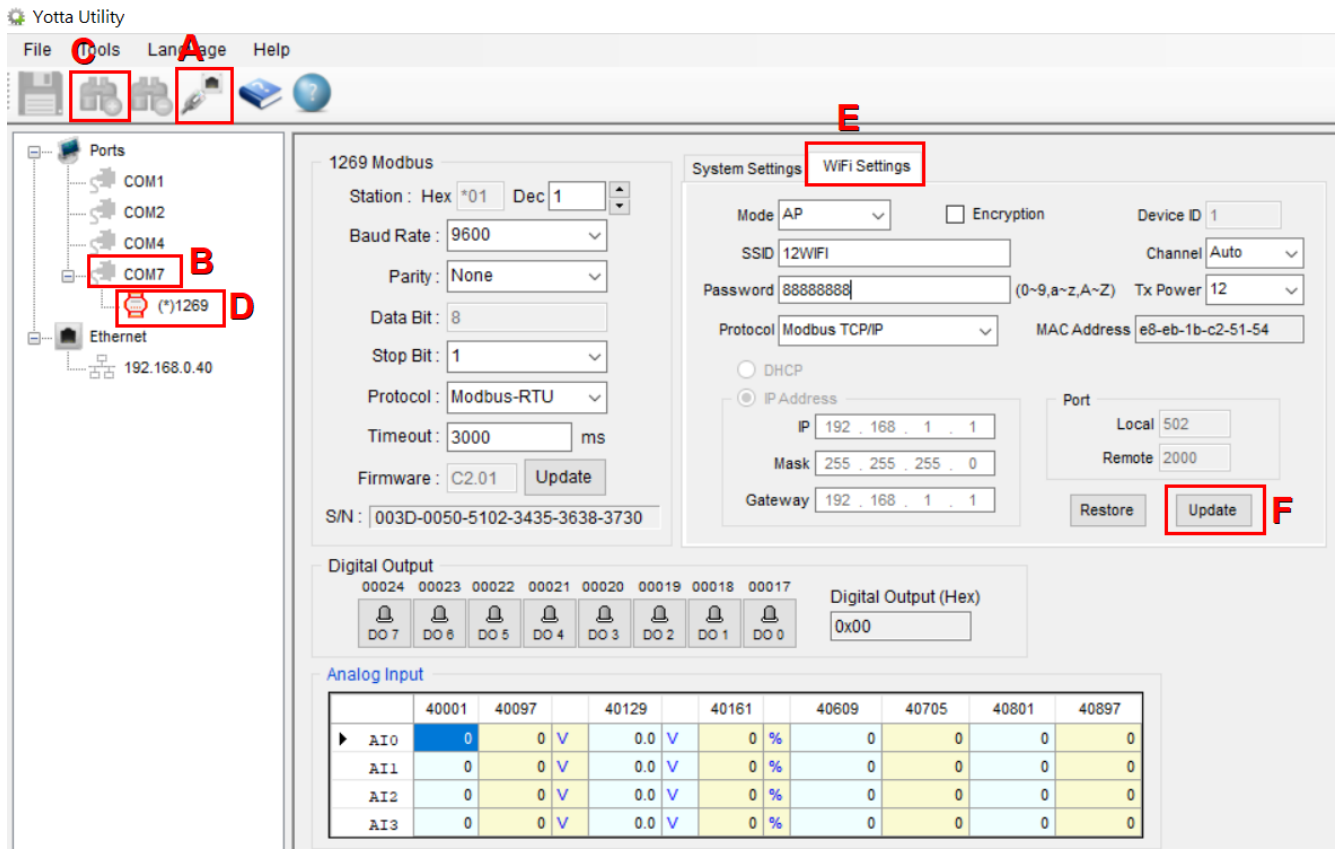
Note2:

Once pressed Update, the setup processes complete one setting cycle. Any new setting will need to do all the processes again to update new setting.

Setup processes for Yottacontrol A-1269 I/O Module

Step1: search A-1269 correctly in YottaUtility(please check below picture for reference)

- 1) Switch on the back of the module to Init mode when setup the module(need to support 24VDC to A-1269 IO module).
- 2) Through the RS-485 or USB port to connect computer, open YottaUtility.
- 3) Click scan Communication serial port(A)
- 4) Select the match communication serial port(B) that computer captured and then click on the search module(C).
- 5) Select the connected module(D), click on the bottom of the icon and then the module will appear parameter configuration interface.



Step2: Key in correct SSID + password(E) to match in the same LAN(default SSID is 12WIFI, and default password is 88888888). If you want to change new SSID and password, please be well reminded to assign 8 digits password to match WIFI password rule. Note that SSID and Password only support 0-9, a-z, A-Z characters, do not support: -! @ # ¥% & * and other characters. Press Update(F) if any revise.

Step3: Switch on the back of the module to Norm mode and then restart 24VDC when regular use the module.

Operation instruction for A-3290 and A-1269:

If no password protection

1. Put AA*2 battery in A-3290.
2. Support 24VDC to A-1269(wait 10~30secs for WIFI connection).
3. Long press the A-3290 START button until the green light is on, once released the START button and the green light will disappear. (If user do not press and hold the START button correctly, the LED will flash red once when pressing other number keys to warn that normal operation cannot be performed).
4. Before press STOP button, user is at working status with A-3290. Press 1~6 will see green light flash 1msec and could get A-1269 DO reaction.
5. Press STOP button will flash to RED one time, then user is at sleeping status with A-3290.
6. Remind to press STOP button to save battery electricity if not working.

If password protection active

1. Put AA*2 battery in A-3290.
2. Support 24VDC to A-1269(wait 10~30secs for WIFI connection).
3. Long press the A-3290 START button until the green light is on, once released the START button and the green light will change to flash green/red.(If user do not press and hold the START button correctly, the LED will flash red once when pressing other number keys to warn that normal operation cannot be performed).
4. Press correct password, then press START button to confirm, LED will light off and A-3290 is in working status. If user do not press correct password, LED will keep green/red flashing even press START button to confirm.
5. Before press STOP button, user is at working status with A-3290. Press 1~6 will see green light flash 1msec and could get A-1269 DO reaction.
6. Press STOP button will flash to RED one time, then user is at sleeping status with A-3290.
7. Remind to press STOP button to save battery electricity if not working.

LED instruction:

Setting mode:

- Long press the A-3290 START button until the green light turns on, then once released the START button, the LED light will disappear(if operation password has been set, then once released the START button, the LED light will continue to flash green/red). Then OK to setup.
- Press Update(E) if any revise(screen will show OK and LED will flash to RED one time)

Operation mode:

If no password protection

- Long press the A-3290 START button until the green light is on, once released the START button and the green light will disappear. (If user do not press and hold the START button correctly, the LED will flash red once when pressing other number keys to warn that normal operation cannot be performed). Now is in working status.
- Working status: Press 1~6 will get green light flash 1msec. Once press STOP button will get red light flash one time. Now is in Sleeping status.
- Sleeping status: No any light appears

If password protection active

- Long press the A-3290 START button until the green light is on, once released the START button and the green light will change to flash green/red.(If user do not press and hold the START button correctly, the LED will flash red once when pressing other number keys to warn that normal operation cannot be performed).
- Keep flash green/red when password is not correct, flash green/red off when password correct and in working status.
- Working status: Press 1~6 will get green light flash 1msec. Once press STOP button will get red light flash one time. Now is in Sleeping status.
- Sleeping status: No any light appears