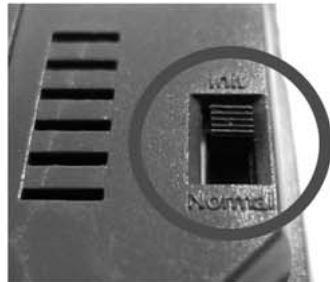


Yottacontrol A Series DCS communicate with PC Via Yottacontrol A Series Converter or DSCAB

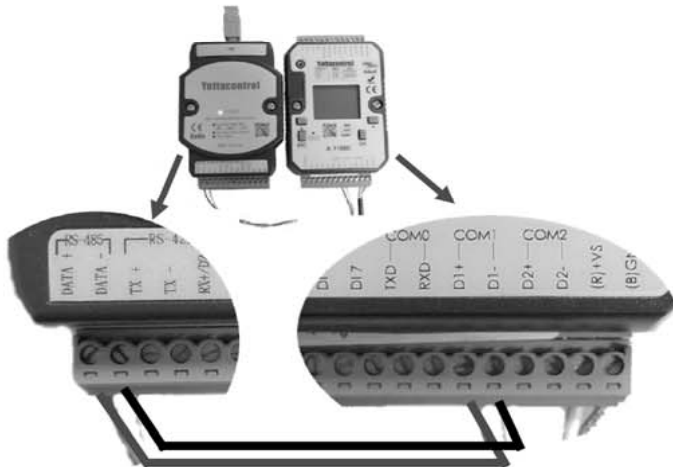
Step1. Prepare A Series DCS and A Series Converter or DSCAB



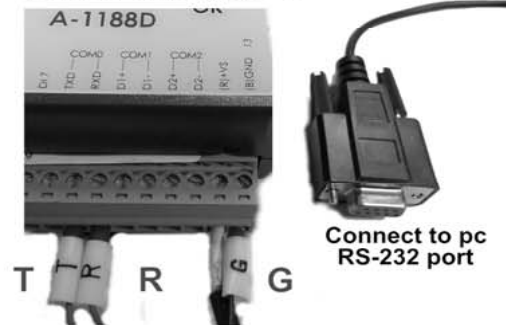
Step2. Turn the A Series DCS' status to 'init'



Step3. Link A Series DCS' to A Series Converter via twisted pair cable



Sep4. or linked DSCAB



Connect to pc
RS-232 port

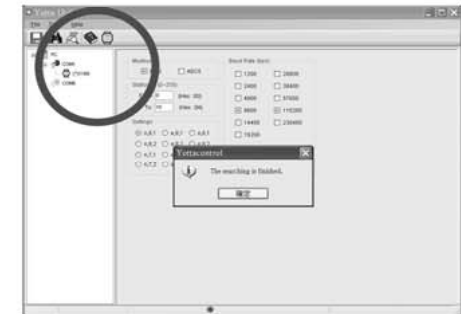
Step5. Turn on the A Series DCS' power



Step6. Click Yottacontrol Utility and search the device



Step7. Searching is finished



Step8. Click YottaEditor to confirm DCS' com port



Step9. Now you can compile program via YottaEditor

